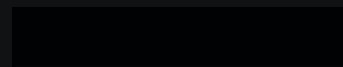


ULT



ULT



MA



MA

Moods

- Earthy vibe
- New classic
- New nordic
- Scandinavian light
- Marrakech

Projects

- Villa Duer
- Villa Lerche
- Kvartal 57
- Villa Groot
- Residential building
- Villa Meise
- Villa Bay
- Villa Rebenreute
- Musikschule am Hofsteig
- Eufemia
- Villa Peer
- S5

 **RANDERS legi**

SINCE 1911

11

14

16

18

20

54

92

122

CONTENT

ANYTHING BUT ORDINARY

WATER-STRUCK BRICKS

THE MODERN 'RETREAT'

INSPIRATION & TRENDS

ULTIMA MOODS

ULTIMA PROJECTS

THE BRICKS

RANDERS TEGL

BRICK

— BY BRICK

When bold ideas, great craftsmanship and extraordinary materials meet, exceptional architecture and unique spaces are born. To make this a reality we believe that it requires bricks that are out of the ordinary. It requires small yet powerful works of art.

Over a century, we have developed and sophisticated our products - brick by brick. Here, sustainability is a given. We use clay, unearthed from the ice age, burnt and shaped for unique perfection.

ULTIMA IS A SERIES OF LINEAR WATER-STRUCK BRICKS. IT HAS THE LENGTH OF TWO ORDINARY BRICKS WITH JUST JUST 38 MM HEIGHT. THE LONG FORMAT CREATES A UNIQUE AND DISTINCTIVE EXPRESSION - THE OBVIOUS CHOICE FOR EXCLUSIVE PROJECTS.

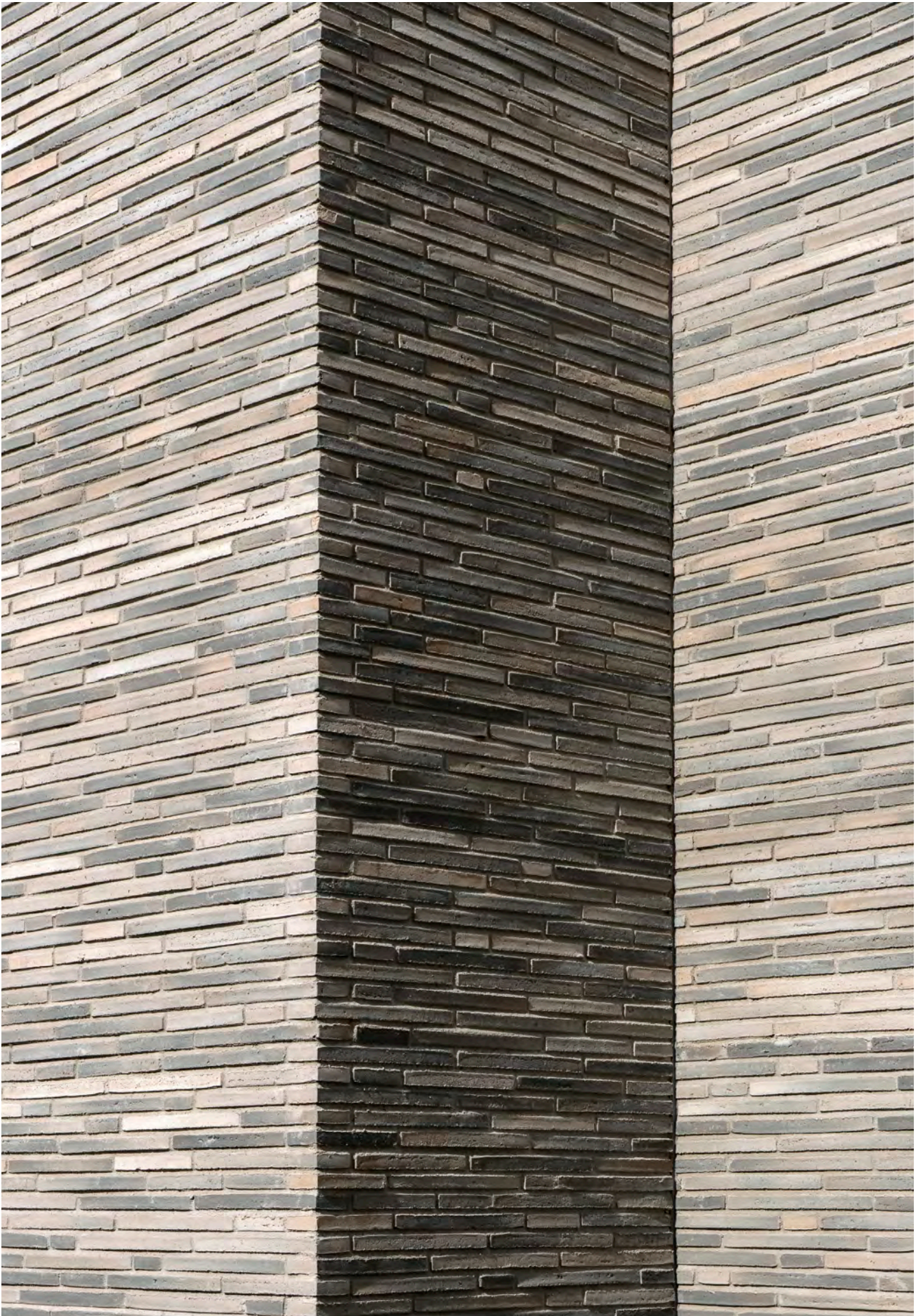
ANYTHING BUT ORDINARY

Ultima is a series of water-struck bricks in linear format. Each brick is a work of art. No bricks are alike - each varies in surface and appearance, making it unique. These bricks add an edge to any architectonic piece of art.

A material as organic and detailed as Ultima bricks, not only stands out by itself but also enriches the appearance of its neighbouring materials. It's the mixture of a tranquil pattern and admirable variation in the masonry that creates a unique and soothing backdrop beyond normal standards.

When creating the best atmosphere for contemporary life, everything comes into play. The nearby environment and surrounding climate, the ideal use of materials, space and the well thought out comfort of interior designs. Combined together, it's the pursuit of well-being in a changeless structure, where it's all about the minor details.

This type of architecture runs on the sole purpose of serving the lives of the people living in it.



A WORK OF

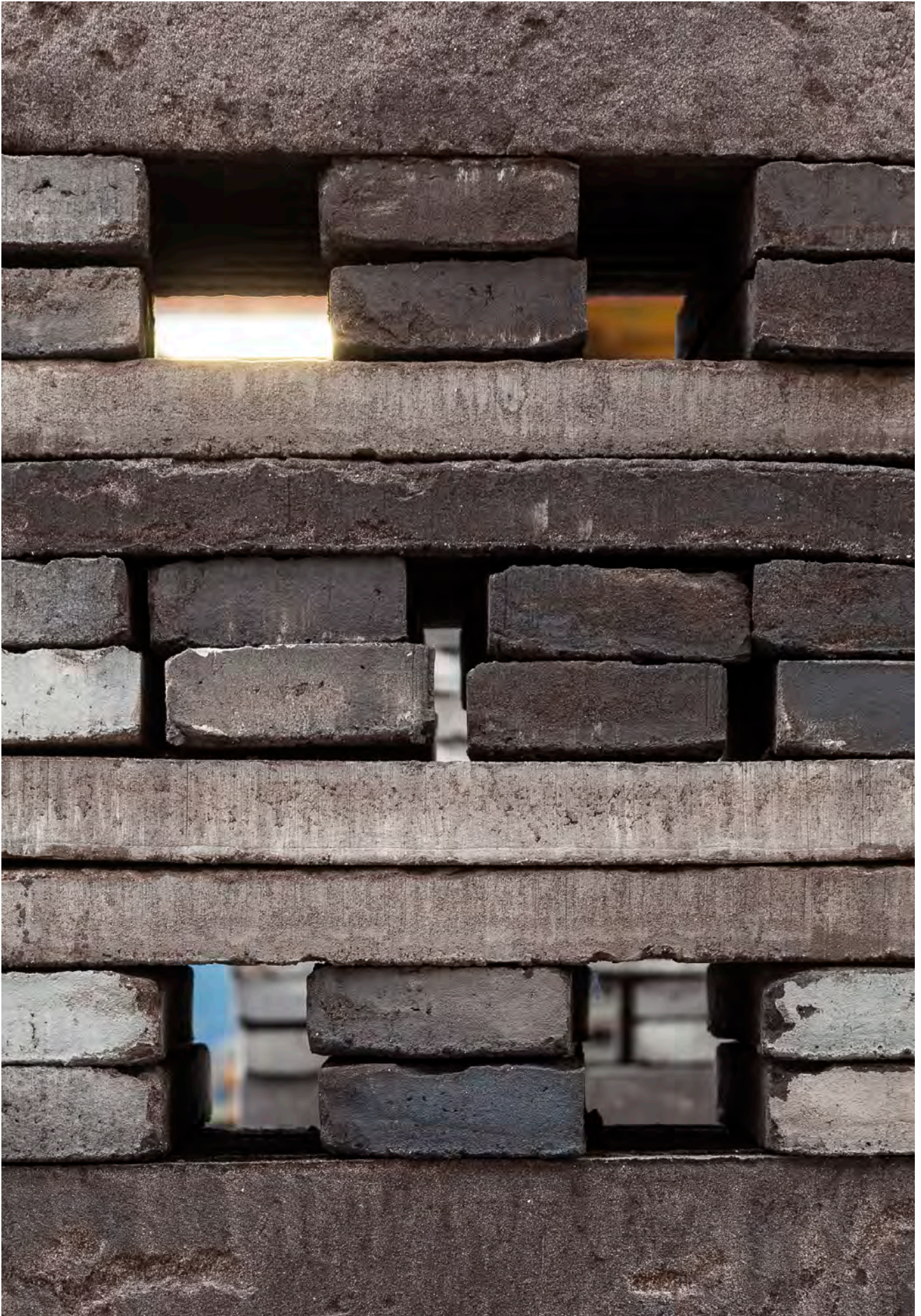






ULTIMA 1:1
468x108x38 mm

— ART



WATER-STRUCK BRICKS ARE SOMEWHAT OF A CONTRADICTION; THEY ARE SMOOTH YET TEXTURED, SOFT YET SHARP. REFINED, BUT NOT AFRAID TO WEAR THE STORIES THAT MAKE THEM SO INTERESTING; EACH AND EVERY BRICK TELLS A TALE OF HONEST CLAY, AND CLEANSING WATER.

WATERSTRUCK BRICKS

A journey that has been passed down by generations, and perfected with technology. Their delicate etchings are a fingerprint of authenticity. Each water-struck brick is marked by its journey; and to read a wall of waterstruck bricks is unforgettable.

It starts with the clay itself. The properties and structure of the material is shaped by the minerals, flora and fauna that exist within the soil; so the quality and composition of the clay is dependant on region, weather and land conditions. Take Scandinavian clay; with land naturally rich in earth minerals and water, the soil unearths the finest clay particles. With a fine and delicate nature, it behaves differently to any other clay in the world.

The water-struck Manufacturing Process enhances the raw material and gives the bricks their distinct aesthetic. The clay mixture is poured into individual moulds, and after settling, water is used as the releasing agent. The clay, it's handling, and the water lubricant combine to imprint a unique textural patina on each resulting brick. Technology emulates the hand, and the water creates a finish that cannot be achieved with any other method of brick-making. These are durable, frost resistant bricks, and yet their subtle surface textures create an endearing fragility too.

YOUR HOME IS MORE THAN WALLS AND A ROOF. IT'S YOUR SAFE SPACE, YOUR SANCTUARY. IT IS A TRUE REFLECTION OF YOUR PERSONALITY, LIFE AND VALUES. IT'S A RETREAT MADE UP OF YOUR STORY, YOUR DREAM.

THE MODERN 'RETREAT'

Practically speaking, a home is a place to reside. It's where we sleep, eat and keep our belongings. But a more emotional approach to construction and design is gaining traction now. We want our homes to be a retreat – an oasis with the right atmosphere instead of just a display of things. We want personality, contentment and cohesion when designing our homes – and Concepts such as atmosphere, vibes and character are key when it comes to building and renovating.

Things are no longer just things. Today, we actually care about the stuff that we surround ourselves with – the story behind it, the origin, the production, and at least some level of sustainability.

The brick is one of the most sustainable building materials and much more than a building unit. Bricks are 100 % inorganic and absorb humidity better than other construction materials, which results in a healthier and more pleasant indoor climate. Thanks to their isolating properties, the energy spent on heating is reduced, and, because brick is 100 % natural, it has zero impact on the environment. Randers Tegl bricks are produced in Denmark and Germany to keep transportation to a minimum. Our brick factories are continually renewed with modern equipment to ensure an environment-friendly and sustainable production as well as safe and healthy working conditions.





Think of your house as a story: a narrative made up of different elements and effects that, when put together, make up the characteristics that says exactly who lives here.

Nothing should be left to chance when we build or renovate our homes. And that's where this mood book comes in. It has been designed to help you make conscious choices and inspire you – to select the right elements and create the home of your dreams.

INSPIRATION & TRENDS

Working with trends in lifestyle, architecture, design and décor, we look at the overall tendencies and turn them into something tangible. Trends come and go – but personality, values and habits are a different story. Trends inspire us and push ideas of how to use and combine materials for our home. They can also guide us in a direction and help us achieve a sense of cohesion and an overall personal style.

The current mega trends such as sustainable construction, transparency and balance are reflected in the choices we make when designing our homes. Choices that reflect our values and our priorities. By combining current trends and your own personal effects and ideas you can achieve an authentic, sophisticated and personalized look and feel.

ULTIMA

— MOODS



A FEELING, A MOOD, OR A VISION - HOW DO WE MAKE IT A REALITY?

This mood book is for the quality-conscious design enthusiasts and curious homeowners. Here you'll find different types of mood boards to inspire you and to challenge your perception about combining elements and creating a cohesive expression for homes made of bricks. The book also illustrates examples of buildings made of bricks that speak for themselves.

EARTHY

— VIBE



1. Wood skirting finished with linseed oil / 2. Pre-patinated copper / 3. Ipe patio boards / 4. RT 151 Ultima / 5. Troldekt / 6. Stretch metal / 7. Hessian / 8. Canadian cedar wood



7.

4.

5.

6.

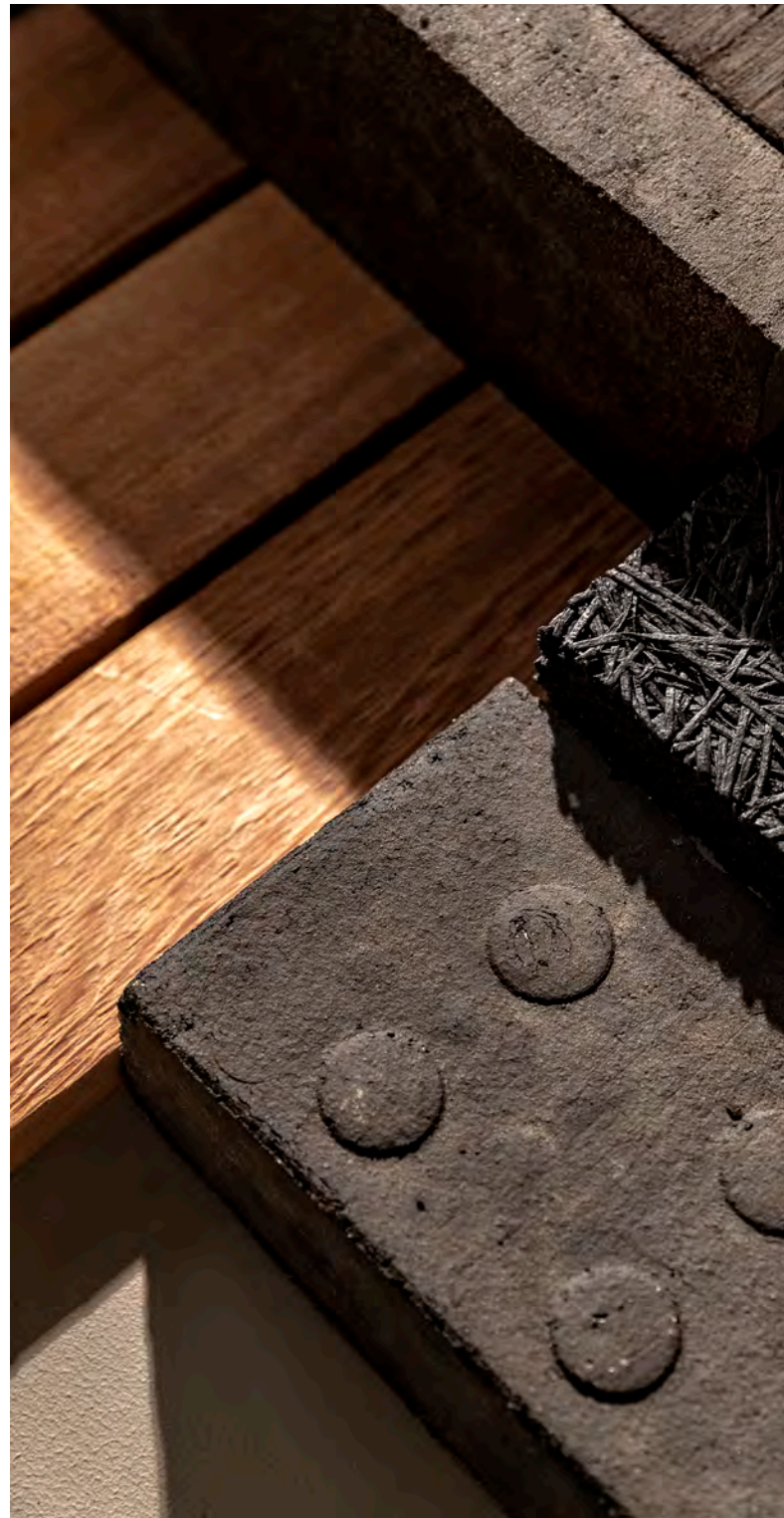
8.



EARTHY VIBE

Combining the RT 151 brick with earthy nuances, warm tones, and wild colors can add a charming contrast to the Nordic style. This mood board is to inspire you to challenge the traditional all-white expression. Explore the variety of materials and colors that can add a refreshing and innovative touch, while maintaining the classic style.

With its blend of earthy nuances from the same color range, the RT 151 Ultima brick will add a warm touch to your home. A dark-toned brick creates a soft vibe and is sure to make your house the coziest one on the block.





Combine the warmer shades with a popping color, like yellow or pink in the form of, for instance, a wood skirting or a detail on a panel between floors, finished with pigmented linseed oil or painted in a bright color. The strong contrast can serve as a quirky and striking detail and add an element of surprise to your décor. Don't be afraid to explore contrasts and pops of color – this is what adds that distinctive personal touch.

Brick is beautiful against cedar wood, which will patinate with time and turn silver or grey. Expanded metal is a very interesting material to work with, and it can add a light, airy touch to the facade and transparency to the panel between the house and annex. Traditionally used for industrial purposes, expanded metal is now gaining popularity in construction and architecture due to its many benefits and applications. It can even be used indoors, for instance, instead of glass, which tends to create a rather cold expression.

Don't be afraid to challenge the clean Nordic minimalism and explore new colors. In fact, we encourage you to. This mood board represents the softness, warmth, and depth that characterize brick, wood, metal, glass and dark acoustic ceiling tiles. Together, these can create a unique home vibe that rhymes with vitality, coziness and courage.

NEW



CLASSIC



1.

2.

4.

3.

1. Suede / 2. RT 159 Ultima / 3. Troldekt / 4. Bronzed brass / 5. Dinesen herringbone oak wood floor / 6. Bamboo braiding



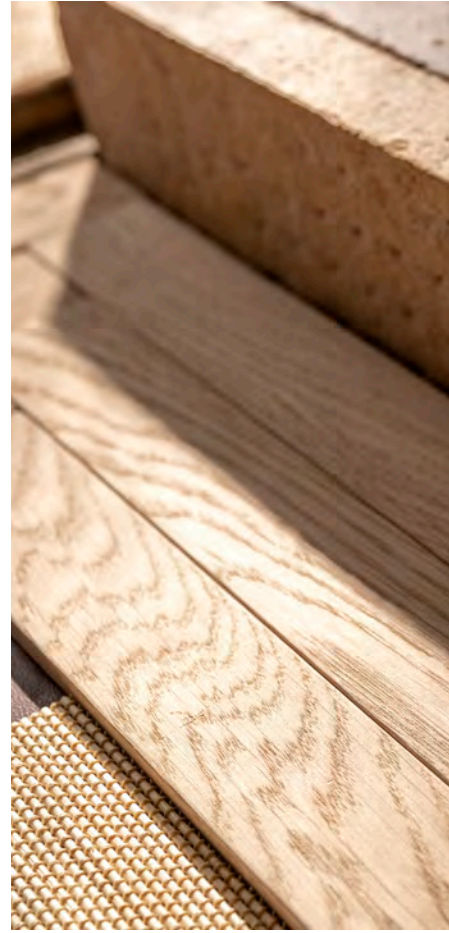
5.

6.

NEW CLASSIC

The combination of the RT 159 Ultima brick with the Nordic interior style is a perfect balance between traditional and modern vibe with a soft, feminine touch. With this mood board, we want to inspire you to go Nordic – but with a twist.

The yellow brick is making a major comeback. The RT 159 Ultima brick is inspired by the classic that we know so well. By taking the properties of the yellow brick and fusing them with the Ultima format, we've created a modern reinterpretation of a true classic. Combining it with earthy-toned wood, tiles and textiles it can create a balanced but modern overall expression.





To challenge the classic look, the yellow brick is paired with bronzed brass with a finish that gives it a natural patina and a slightly darker surface. Add industrial Troldekt ceilings for a rustic touch and optimize room acoustics.

Use natural stone and sandstone inside. By bringing in natural materials such as stone and sandstone, used generally on the exterior, you can create an earthy vibe and a wonderfully balanced décor.

Shades of rose pink or nude can do wonders when mixed with the more rustic tones and surfaces of brick, brass, and industrial ceilings. The soft colors create a balance and bind together all the elements of a modern expression. A surprising element, like braiding on curtains, adds a Japanese twist. Similar yet distinctive, Japanese and Danish interior design traditions blend together very well, and combining the two would add a unique touch to any home.



NEW

— **NORDIC**



1.

2.

3.

4.

1. RT 160 Ultima / 2. Wood skirting finished with linseed oil / 3. Marble / 4. Dinesen Douglas floor planks
5. Structured aluminum / 6. Vegetal leather



5.

6.

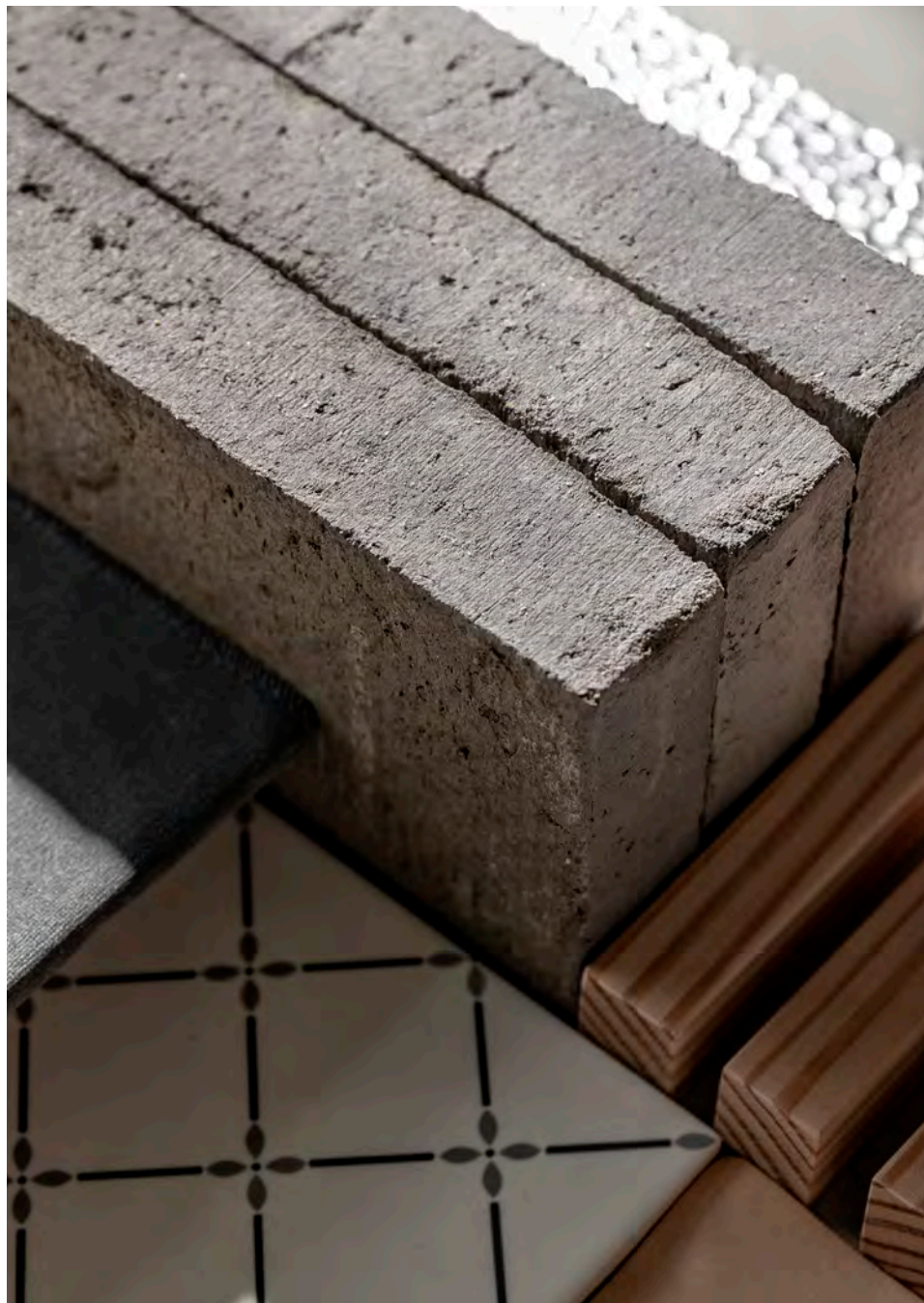
NEW NORDIC

The RT 160 brick can challenge our perception of New Nordic – combining the brick with contrasting elements. A fresh new take on Nordic style emerges.

Ultima RT 160 has greyish and cold nuances to match the Nordic climate and temperature. The brick is well-suited for combining with other surfaces. You can add another material to the construction of the house and use different facade elements such as wood and metal which complement this particular brick wonderfully. The possibilities are endless.

The brick's rather cold expression can be softened using elements of Douglas wood with a lye or white finish. Or, you can add metal or expanded metal to create a contrast to the brick surface.





Inside and outside, the bricks can be complemented using pre-patinated zinc to tone down the polished surface. And, while steel may be the safer choice, you can go for brass on details like knobs, cabinets, front door, or lamps to create a bold and surprising effect.

To soften the sleek look, you can use Moroccan tiles, which add a rather different touch compared to traditional tiles. Together, Italian marble and Moroccan tiles will challenge and the traditional Nordic expression because they tell a different story.

The look can be completed with soft velvet curtains in Paris blue color, pigmented linseed oil on the wood skirting and leather on furniture or as wall lining. It's in the combination of materials that creates a new, refreshing take on the Nordic style and helps you achieve an expression that is truly your own.

— LIGHT

SCANDINAVIAN



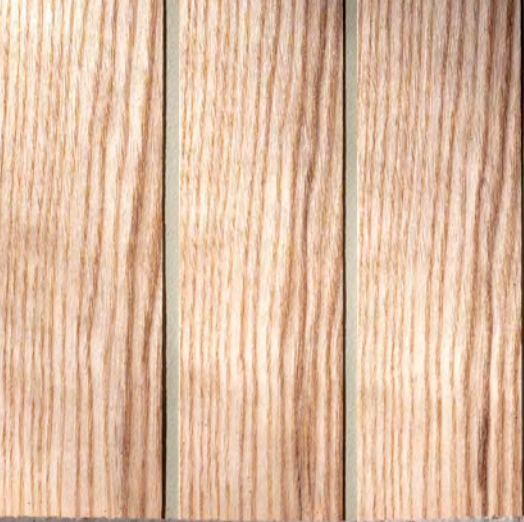
1.

3.

2.

4.

1. Tinted glass / 2. RT 154 Ultima / 3. Icopal roofing sheets / 4. Cork / 5. Ash wood braiding / 6. Green marble



5.



6.





SCANDINAVIAN LIGHT

If you're going for the light and breezy Scandinavian style, the RT 154 is the best choice. Inspiration from the Scandinavian terrain can be seen in the beautiful varying colors and tones on the brick's surface – combine it with natural shades to achieve a warmer and softer feel.

Using the RT 154 Ultima gives the house a soft and light exterior. Despite its light surface, the brick holds some warm nuances, and the fine burn in the water-struck surface makes for a distinctive, eye-catching appearance.

Combine it with greenish nuances and brass for a sophisticated look, like green-toned roof tiles instead of traditional black tiles. Green marble on larger elements such as walls or table tops would be a beautiful final touch. Here, the style is completed by braided ash wood or el-

ements in braided wood to add warmth and texture. To improve acoustics and give a cozy vibe, go for cork on floors or walls. Cork is an interesting material with a lot of excellent properties that can add a warm and soft touch to your décor.

Use dusted green leather, green glass, and other elements in greenish shades to elevate the look. The green tones, the wood, and the stunning RT 154 Ultima brick will complement each other beautifully.



MARRA

— **KECH**



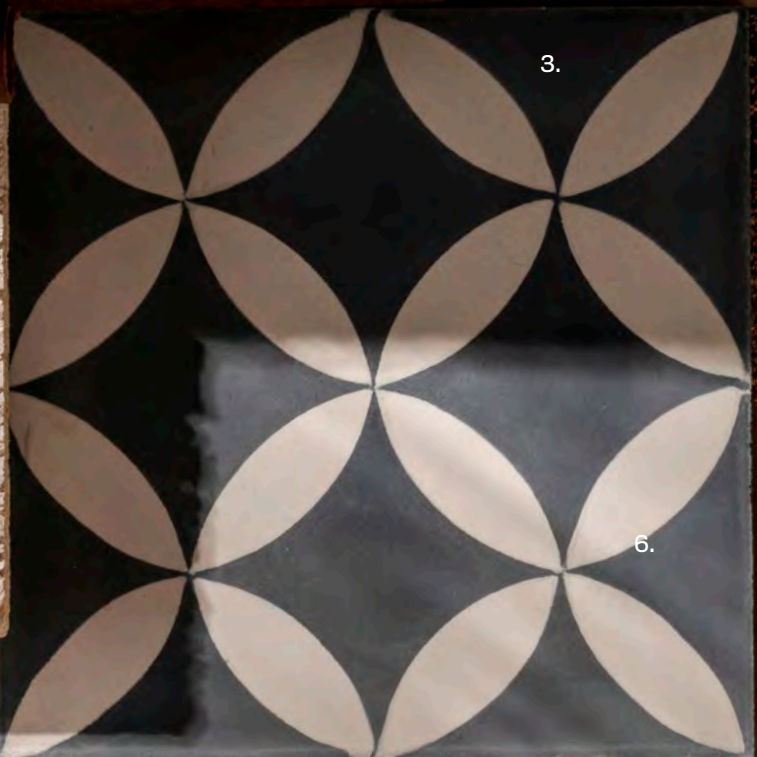
1. RT 158 Ultima / 2. Dinesen ash plank / 3. Moroccan tiles / 4. Golden tight-weave carpet / 5. Smoked glass



2.



3.



6.

4.



5.





MARRAKECH

The red RT 158 Ultima brick has got that certain something: it represents the bold choice and is a new take on the traditional red brick, which used to be very popular at one point.

The RT 158 brick has wild burnt nuances and color variations in its surface, and one brick holds both completely dark and bright red tones. Hit by sunlight, the brick makes the building glow with warmth.

To achieve cohesion and to make this stunning brick come into its own, you can add an interesting twist by using it in your interior décor as well as on the exterior. One of the great things about bricks as a building material is that they can be placed both vertically and horizontally. So, you can have a beautiful floor of vertical bricks inside, in perfect harmony with the outside walls or the exposed brick walls inside.



To get that soulful Marrakech vibe, add earthy-hued textiles, ash floors, and handmade Moroccan tiles. The greenish tones will serve as a bold contrast against the red bricks.

Use warm and smoked glass or bronze in details of the facade or the interior décor. Mix it up with Troldekt ceilings and modern art, and voilà; a distinctive home with a personal touch that oozes of vitality and warmth is ready.



ULTIMA

— PROJECTS



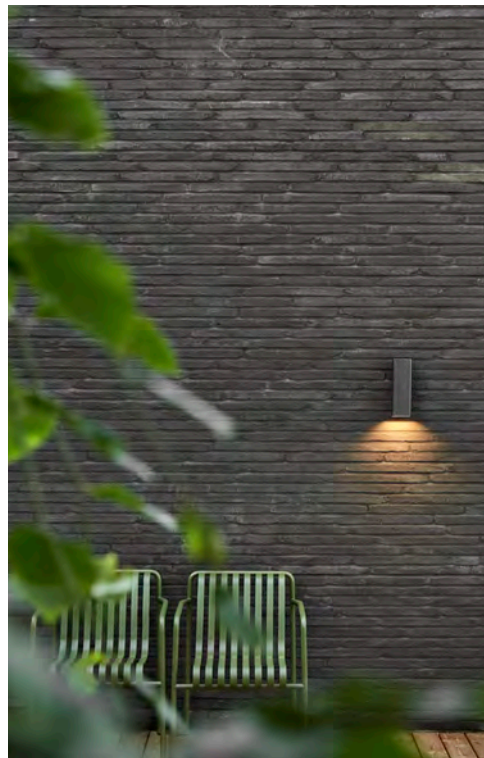
ULTIMA, RT 150

Completed: 2016

Type: Villa Lerche, private residence

Location: Randers, Denmark

Architect: Friis & Molte



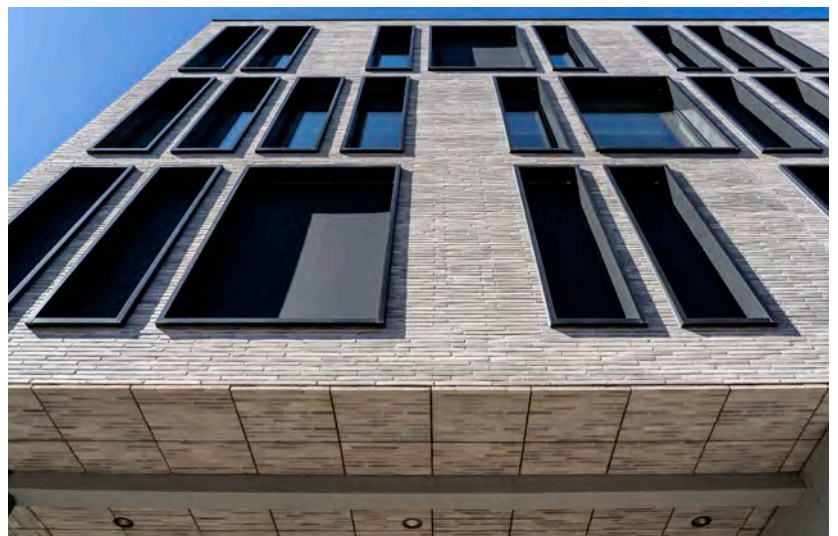




ULTIMA, RT 152
Type: Private residence
Location: Aarhus, Denmark



ULTIMA, RT 153
Completed: 2018
Type: Commercial building
Location: Oslo, Norway
Architect: AART/SJ architects



ULTIMA, RT 153

Completed: 2017

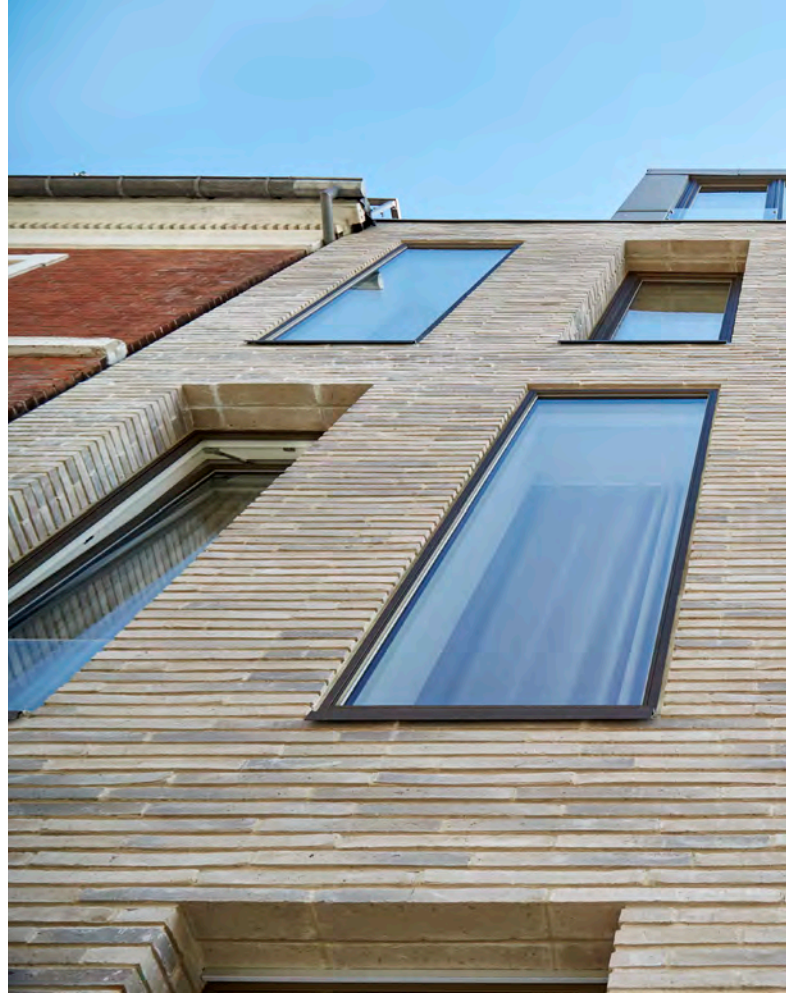
Type: Kvartal 57, residential

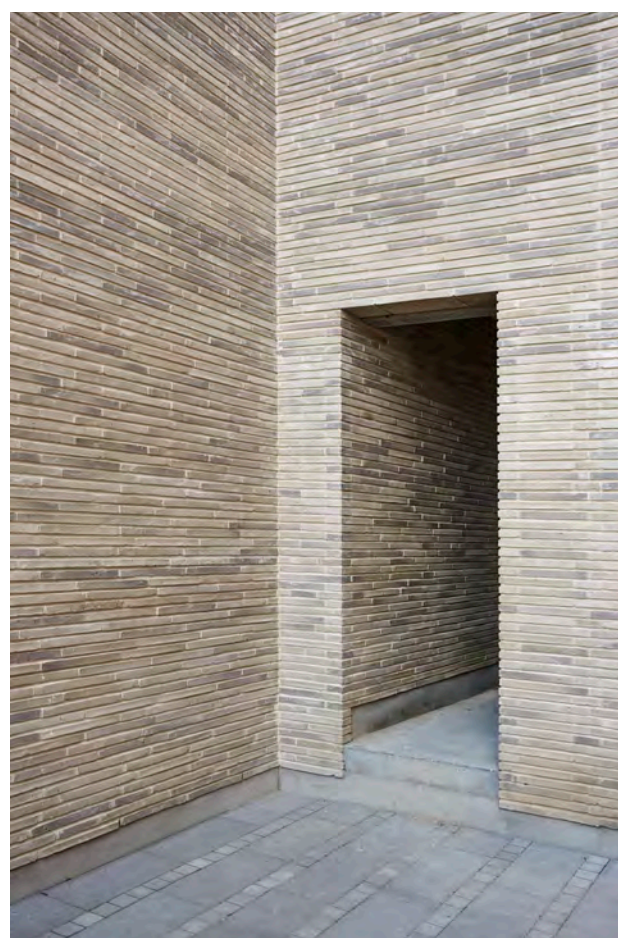
Location: Kristiansand, Norway

Architect: Kristin Jarmund Arkitekter









ULTIMA, RT 153
Completed: 2016
Type: Private residence
Location: Aarhus, Denmark
Architect: Space Unlimited



ULTIMA, RT 153

Completed: 2017

Type: Villa Groot, private residence

Location: Groot-Bijgaarden, Belgium

Architect: Lemaire & Longeval



ULTIMA, RT 154

Completed: 2018

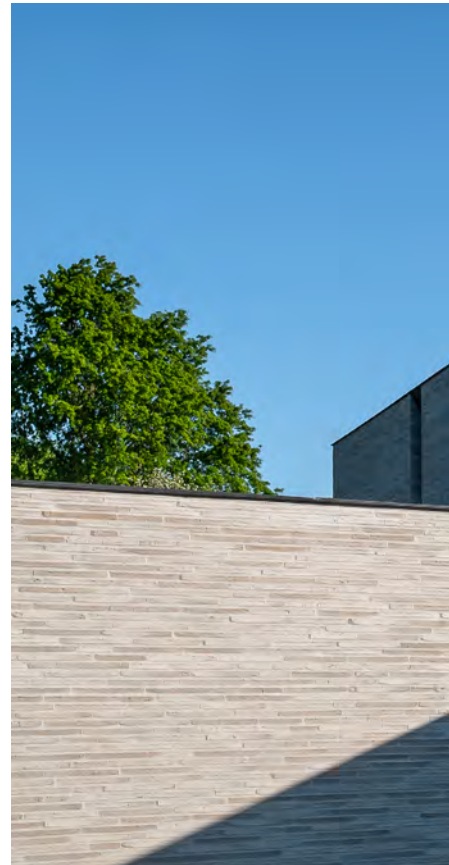
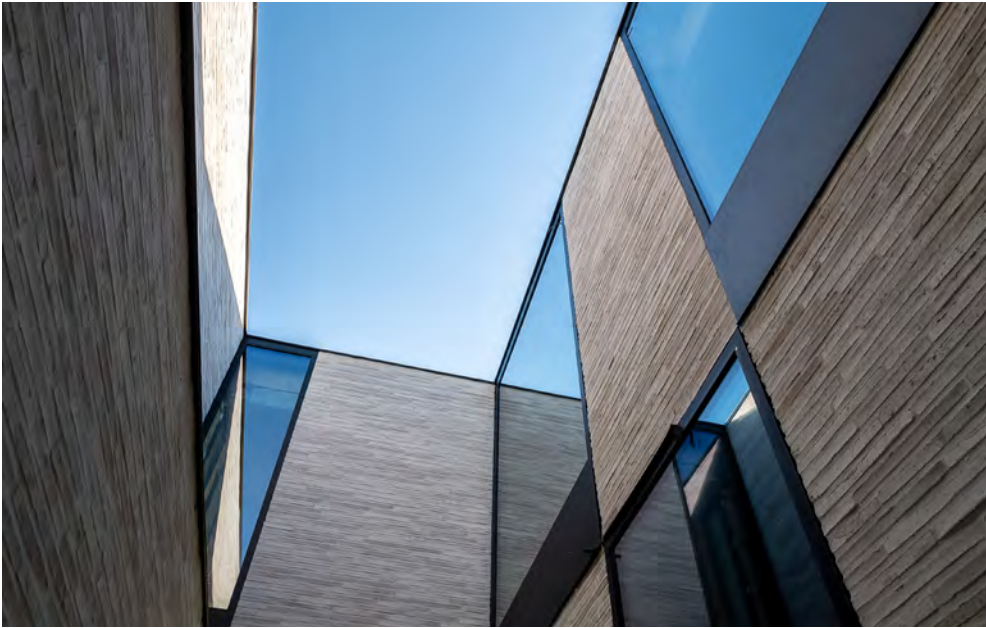
Type: Villa in Altona, residential

Location: Hamburg, Germany

Architect: nentwig.notbohm Architekten







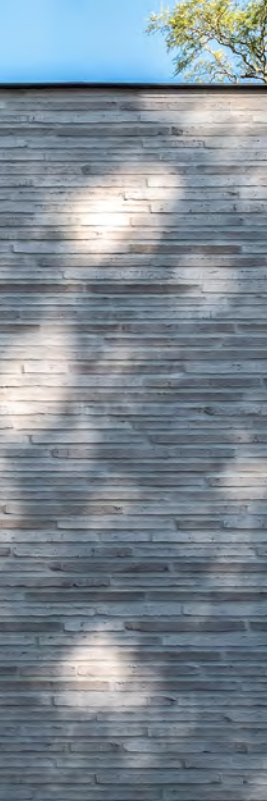
ULTIMA, RT 154

Completed: 2018

Type: Villa Meise, private residence

Location: Meise, Belgium

Architect: UAU Collectiv



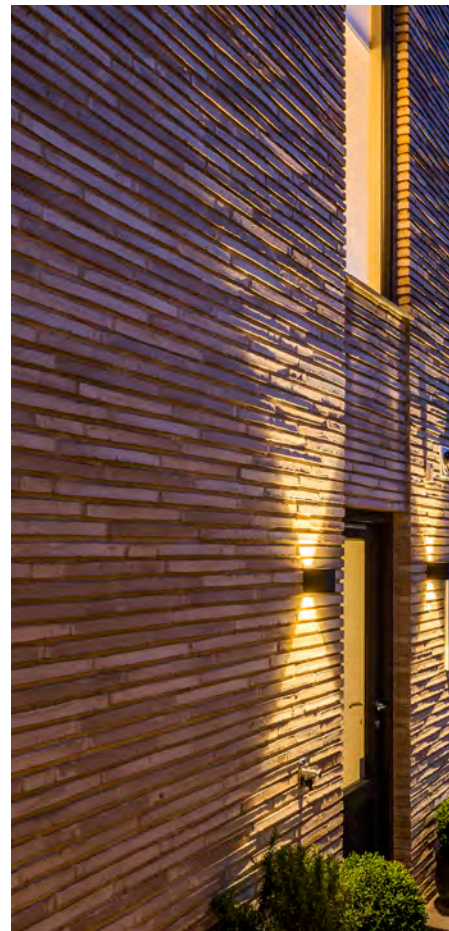
ULTIMA, RT 154

Completed: 2016

Type: Villa Bay, private residence

Location: Gentofte, Denmark

Architect: Cifre arkitekter m.a.a.







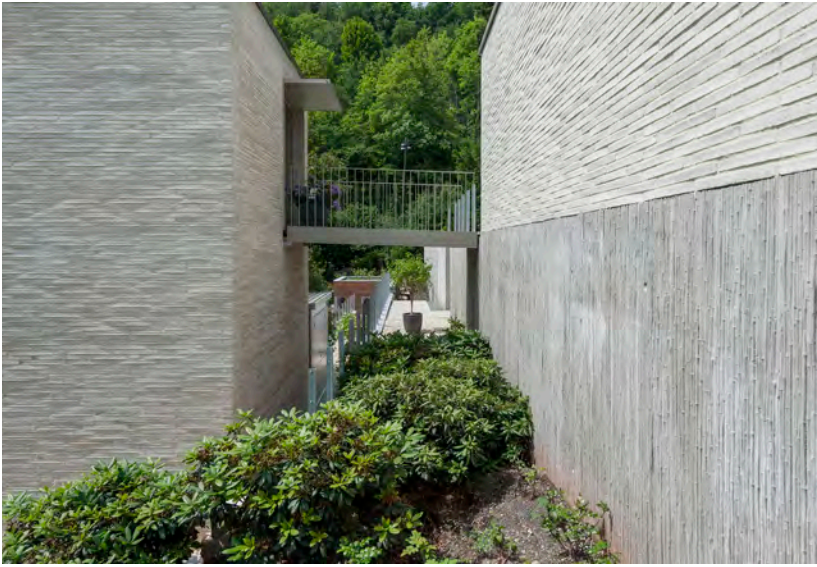
ULTIMA, RT 154

Completed: 2017

Type: Villa Rebenreute, private residence

Location: Stuttgart, Germany

Architect: Fischer-Architektur





ULTIMA, RT 154

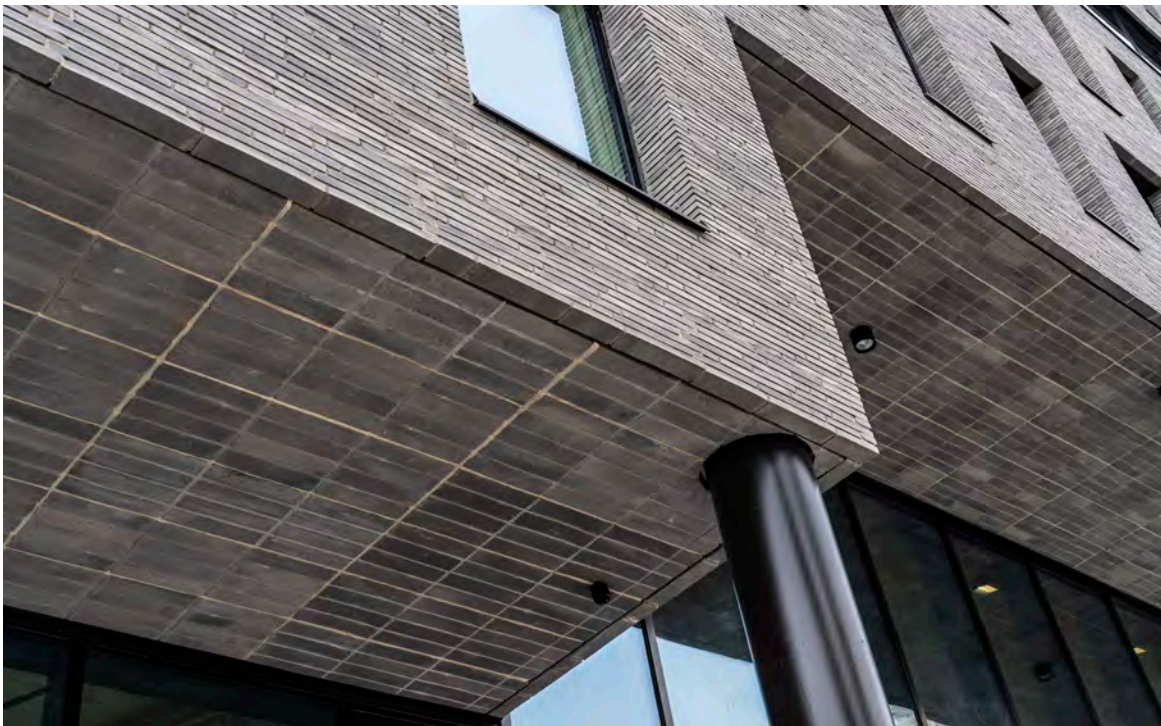
Completed: 2017

Type: Musikschule am Hofsteig in Wolfurt

Location: Wolfurt, Austria

Architect: Fink Thurnher







ULTIMA, RT 155
Completed: 2019
Type: Eufemia, Office building
Location: Oslo, Norway
Architect: A-lab

ULTIMA, RT 156

Completed: 2016

Type: Residential and commercial building

Location: Antwerp, Belgium

Architect: Binst Architects





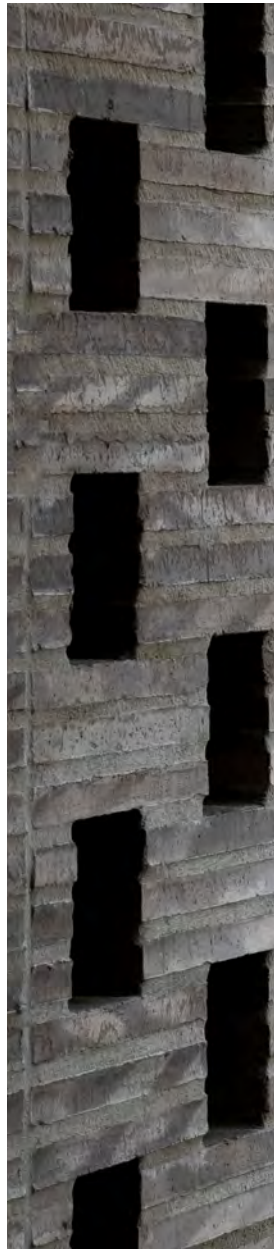
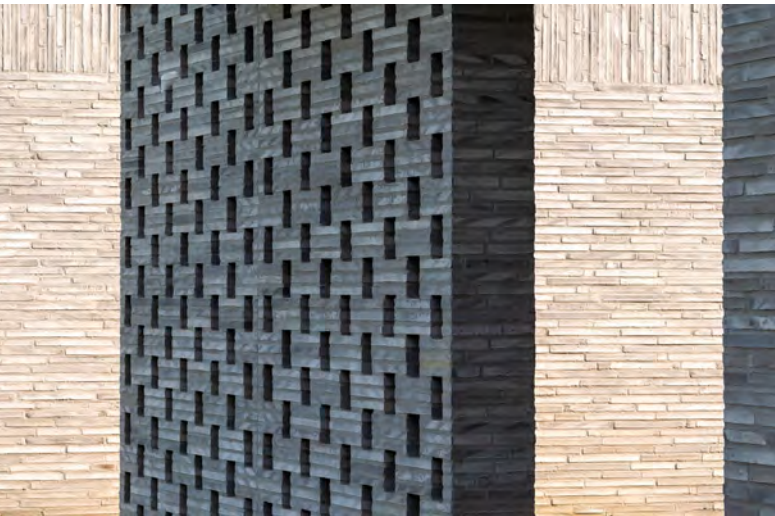
ULTIMA, RT 156

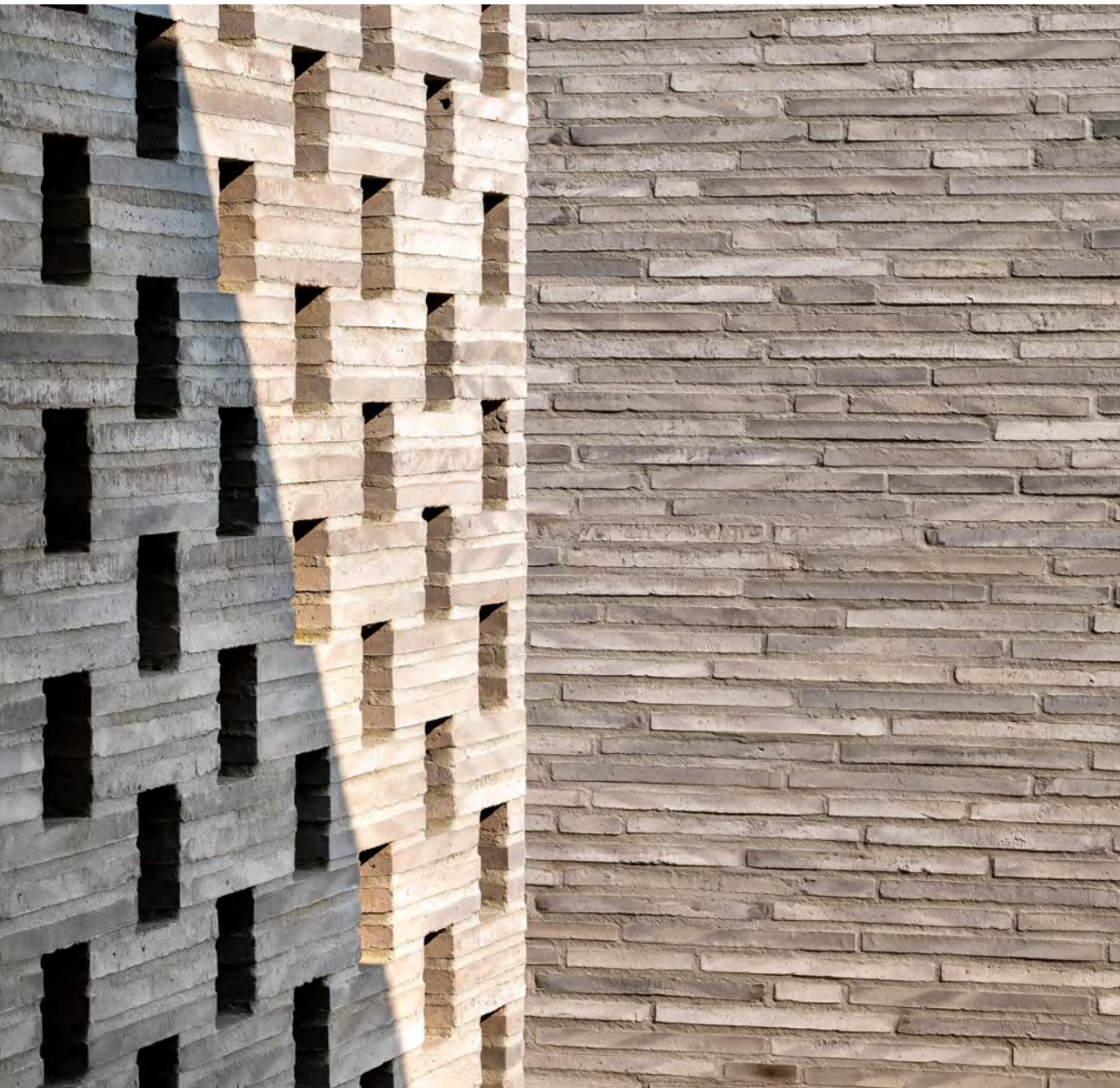
Completed: 2018

Type: Villa Peer, private residence

Location: Peer, Belgium

Architect: UAU Collective









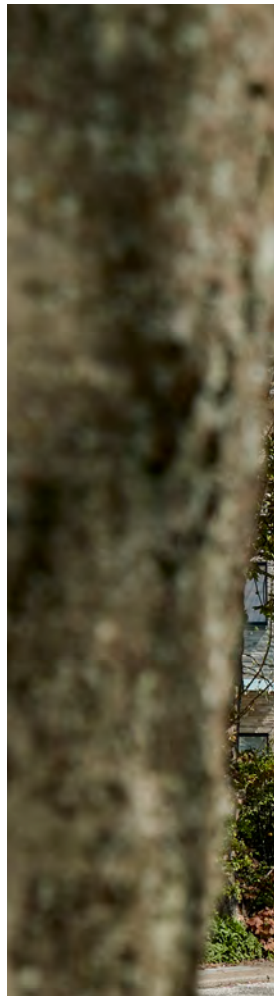
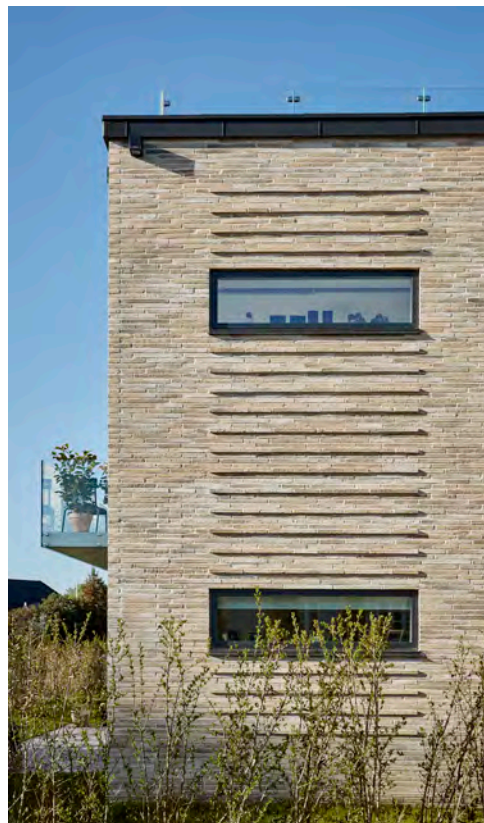
ULTIMA, RT 157

Completed: 2017

Type: S5, commercial building

Location: Fredrikstad, Norway

Architect: Griff Arkitektur



ULTIMA, RT 159

Completed: 2017

Type: Residential building

Location: Aalborg, Denmark

Architect: Ideal Arkitekter



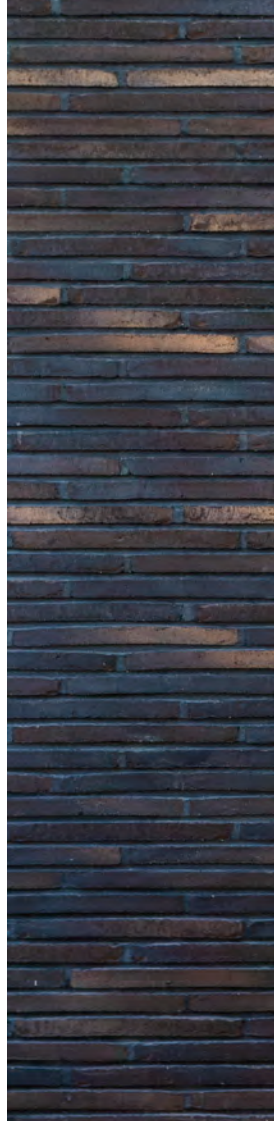
ULTIMA, RT 161

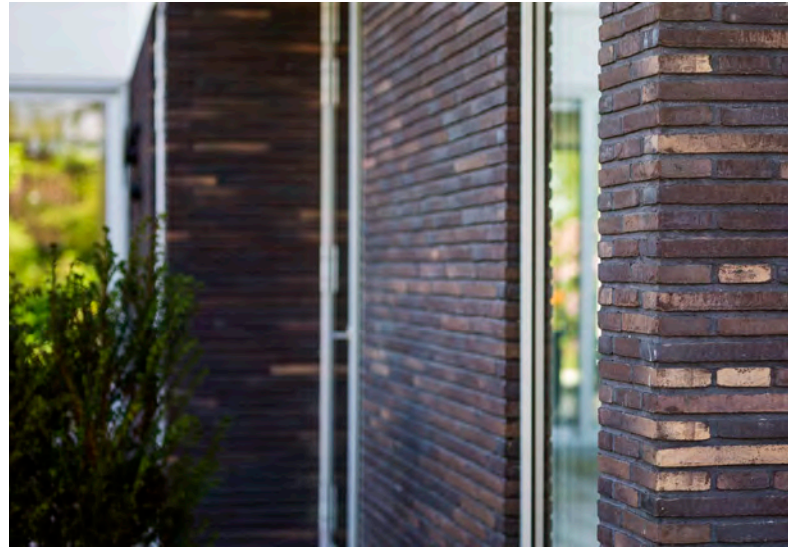
Completed: 2017

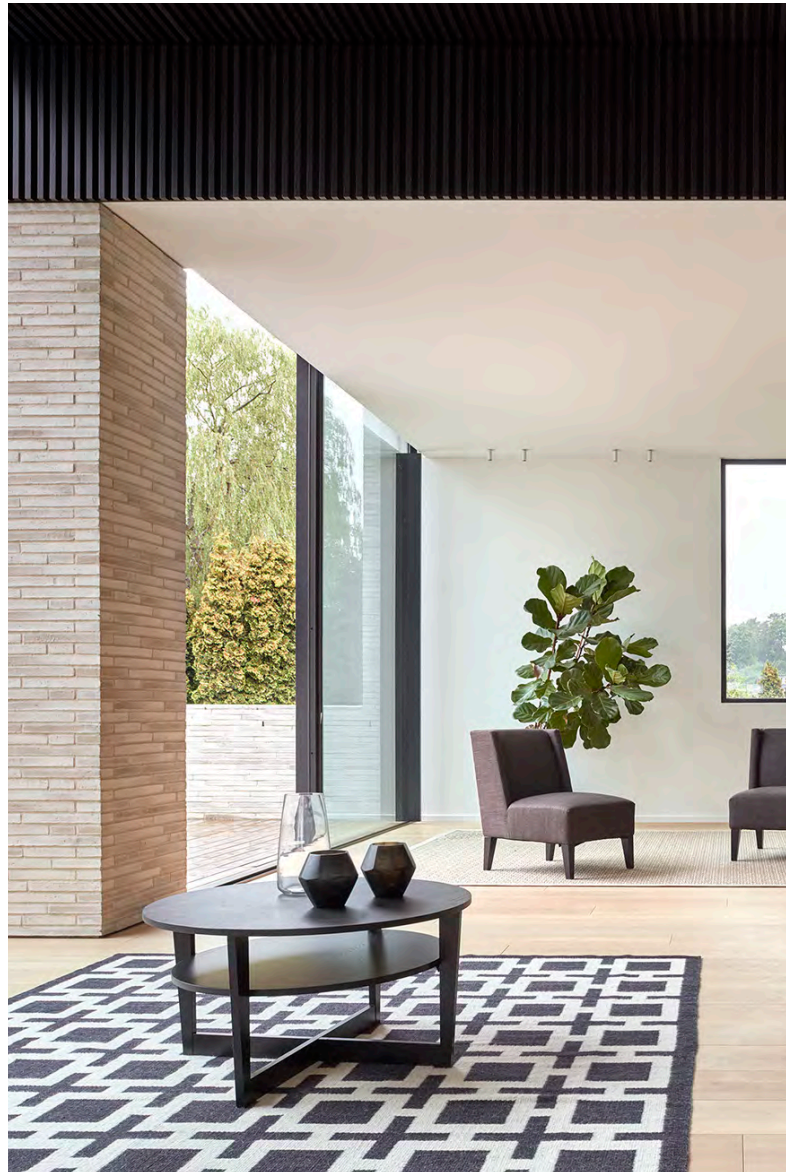
Type: Villa Duer, private residence

Location: Charlottenlund, Denmark

Architect: N+P ARKITEKTUR









ULTIMA, RT 162

Completed: 2019

Type: Residential building

Location: Oslo, Norway

Architect: Reiulf Ramstad Architects

THE

— **BRICKS**

**WHEN YOU'RE FACED WITH A PROJECT
THAT REQUIRES FORMAT AND
CHARACTER, ULTIMA BRICK
OFFERS SOMETHING EXTRAORDINARY.**

Ultima is a series of water-struck bricks in a new, exclusive linear format and the length of two ordinary bricks.

The long format, the unique shape, and the variations in surface and appearance create a distinctive expression in the brickwork.



RT 150



Joint colour: Anthrazit

**WEIGHTY
VIVID
BLACK**

The RT150 is burned dark without turning it into black and gloomy. It is strong and weighty – yet soft. Put together, its varying surface comes to life and turns vivid black.



RT 151



Joint colour: Anthrazit

**BLACKENED
WITH A
GENTLE HAND**

The RT 151 is blackened with a deliberate eye for bright colour variations. Its earthy warmth fades between light and dark, shifts endlessly. A perfect choice for the extravagant home.



RT 152



Joint colour: Grey White

**CARESSED
WITH COOL AND
CALM TONES**

The RT 152 is purposely scorched for cool nonchalance. Uncountable shades of grey and soft-molded traces blends into a carefully orchestrated harmony that soothes the eye.



RT 153



Joint colour: Grey White

**MUTED GREY
WITH A TOUCH
OF KINDNESS**

The RT 153 adds a raw and coarse touch to your light-tinted building. The muted colour combined with an erratic surface creates a distinctive expression, suitable for exceptional architecture.



RT 154



Joint colour: White

**LIGHT-TINTED
WITH A RAW AND
COARSE TOUCH**

The RT 154 is chameleon of a sand-coloured diversity. On the brightest days, it battles the bluest skies and the scorching sun, while turning on its warming desert-tan for those everlasting summer nights.



RT 155



Joint colour: Grey White

**CURRENTS
OF COALY
STRAITS**

The RT 155 is charred for cheerful calmness. Its occasional gloomy differences collaborate with a rose-tinted grey to create a highly notable and distinctive brickwork.



RT 156



Joint colour: Grey White

**BURNING
QUIET
EXTRAVAGANCE**

The RT 156 is burnt for a comforting indulgence. Generous and subtle, with the tiniest possible deviations. Designed for accommodating the best possible version of contemporary life.



RT 157



Joint colour: Grey

**A CHARACTERISTIC
COLOUR RIOT TONED
BY NATURE**

The RT 157 is toned by nature itself. Caressed and refined by fire. The warmth of the generation's erosion creates astonishing variations in one of our most distinguished bricks.



RT 158



Joint colour: Grey

**WELL-KNOWN SHADING
ADDED A
MELLOW TOUCH**

The RT 158 adds a mellow touch to a well-known, but watchfully shaded coloration. Bringing out the finest of the deep reds and incinerated blacks, its symphony resembles natural variation at its best.



RT 159



Joint colour: Grey White

**A REINTERPRETED
CLASSIC WITH A HINT
OF SUNSHINE**

The RT 159 is a deep dive into everlasting sunrays. Indulge in a world of warmth and transparent yellow shades that oozes nature and comfort, giving out vibes of unequalled Mediterranean beauty.



RT 160



Joint colour: Grey White

**A GRACIOUS
BANQUET OF
GREYS**

The RT 160 is the mingling of blushshades branded with sophistication. Experience a bustling banquet of tones with an exclusive kaleidoscopic look that encourages dazing and dreaming.



RT 161



Joint colour: Anthrazit

**MIDNIGHT BLUES
STROKED WITH BRONZED
SUNRAYS**

The RT 161 has gloomy bronzed rays that resembles a phoenix soaring high from deep purplish ashes. Like the birth of the first light on the horizon, the warm highlights and subtle background blend together in a perfectly composed accordance.



RT 162



Joint colour: White

**A MILLION
SHADES OF WHITE
SERENITY**

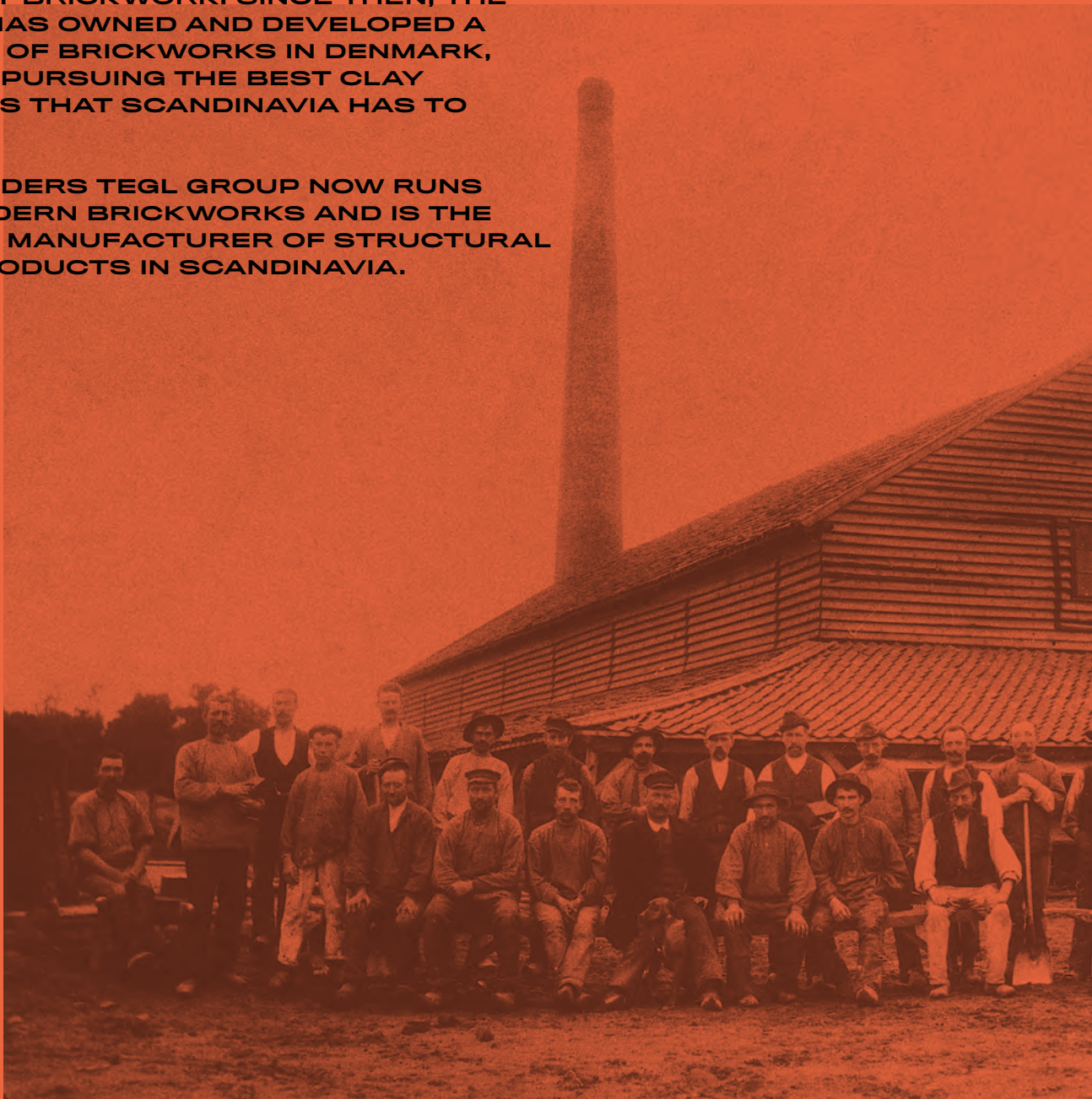
The RT 162 in full white challenges architectural perspectives and radiates a state of serenity. Empowered by the lightest tints possible, a million shades of white has a remarkably subtle elegance that speaks with its own profound extravagance.

SINCE 1911

RANDERS TEGL

THE STORY OF THE RANDERS TEGL GROUP BEGINS IN 1911, WHEN A 27-YEAR-OLD ENGINEER, CARL THEODOR PIPER, BOUGHT HIS FIRST BRICKWORK. SINCE THEN, THE GROUP HAS OWNED AND DEVELOPED A NUMBER OF BRICKWORKS IN DENMARK, ALWAYS PURSUING THE BEST CLAY DEPOSITS THAT SCANDINAVIA HAS TO OFFER.

THE RANDERS TEGL GROUP NOW RUNS FIVE MODERN BRICKWORKS AND IS THE LEADING MANUFACTURER OF STRUCTURAL CLAY PRODUCTS IN SCANDINAVIA.





We have a conviction to do things the proper way. We feel a compulsion to build what you design and to be involved in pushing the envelope when it comes to construction. We take the effort to add value for you, and we engage in innovative solutions to make your architectural vision a reality. As an architect, you work with fiction every day – fiction that becomes reality and shapes people's lives moving forward. Together, we can create architecture in a space where nature, society, finances and people meet.

We appreciate good craftsmanship, and we're all about to creating new, innovative projects using bricks and tiles based on more than a century of experience and an undying passion. We don't think of our products as just bricks and tiles: we see them as small works of art with a role to play in a bigger picture. A brick is nothing without a vision – your vision. That's why we consider it a great honour to craft bricks for our customers and be a part of visionary architecture across the world.

RANDERS  legi

SINCE 1911

